

# AUTUMN/WINTER 2023/24

## WEEK 1

### WEEK COMMENCING

September 18, October 9,  
October 30, November 20,  
December 11, January 1,  
January 22, February 12



#### MONDAY



Margherita pizza  
pommes noisette  
vegetable sticks

Gluten Milk Soya

OR



Jacket potatoes with  
cheese, beans or  
tuna mayonnaise  
& mixed salad

Milk Egg Fish

OR

Filled baguette with  
ham- Gluten Sesame or  
cheese Gluten Sesame Milk

#### DESSERT



Mixed berry mousse  
& apple wedge

Milk

OR Fruit

#### TUESDAY



Nottinghamshire sausages,  
mashed potatoes  
seasonal vegetables

Gluten sulphur dioxide

OR



Jacket potatoes with  
cheese, beans or  
tuna mayonnaise  
& mixed salad

Milk Egg Fish

OR

Filled baguette with  
ham- Gluten Sesame or  
cheese Gluten Sesame Milk

#### DESSERT



Cornflake tart  
& custard

Milk Gluten Sulphur Dioxide

OR Fruit

#### WEDNESDAY



Southern style burger  
in a bun  
jacket wedges  
carrot sticks & ranch salad

Gluten Egg Milk Sesame

OR



Jacket potatoes with  
cheese, beans or  
tuna mayonnaise  
& mixed salad

Milk Egg Fish

OR

Filled baguette with  
ham- Gluten Sesame or  
cheese Gluten Sesame Milk

#### DESSERT



Fruit flapjack

Gluten

OR Fruit

#### THURSDAY



Roast turkey & stuffing  
gravy  
roast OR mashed potatoes  
cabbage & carrots

Gluten

OR



Jacket potatoes with  
cheese, beans or  
tuna mayonnaise  
& mixed salad

Milk Egg Fish

OR

Filled baguette with  
ham- Gluten Sesame or  
cheese Gluten Sesame Milk

#### DESSERT



Strawberry ice cream tub

Milk

OR Fruit

#### FRIDAY



MSC fish fingers diced  
potatoes  
garden peas & crunchy  
veg, tomato ketchup

Gluten Fish

OR



Jacket potatoes with  
cheese, beans or  
tuna mayonnaise  
& mixed salad

Milk Egg Fish

OR

Filled baguette with  
ham- Gluten Sesame or  
cheese Gluten Sesame Milk

#### DESSERT



Apple muffin

Milk Gluten Egg

OR Fruit

**AVAILABLE DAILY:** Best of both bread Gluten and Soya Seasonal vegetables available daily, Coleslaw Egg when served. Vegetarian meals available upon request

[www.nottinghamshire.gov.uk/schoolmeals](http://www.nottinghamshire.gov.uk/schoolmeals)



Nottinghamshire  
County Council



# AUTUMN/WINTER 2023/24

## WEEK 2

### WEEK COMMENCING

September 4, September 25,  
October 16, November 6,  
November 27, December 18,  
January 8, January 29



#### MONDAY



Quorn dippers  
roast baby potatoes  
sweetcorn  
cucumber sticks

Gluten

OR



Jacket potatoes with  
cheese, beans or  
tuna mayonnaise  
& mixed salad

Milk Egg Fish

OR

Filled baguette with  
ham- Gluten Sesame or  
cheese Gluten Sesame Milk

#### DESSERT



Chocolate sponge  
& chocolate sauce

Milk Egg Gluten

OR Fruit

#### TUESDAY



Nottinghamshire sausage  
gravy, Yorkshire pudding  
mashed potato  
broccoli & carrots

Egg Gluten Milk Sulphur Dioxide

OR



Jacket potatoes with  
cheese, beans or  
tuna mayonnaise  
& mixed salad

Milk Egg Fish

OR

Filled baguette with  
ham- Gluten Sesame or  
cheese Gluten Sesame Milk

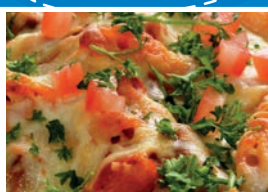
#### DESSERT



Jelly & fruit

OR Fruit

#### WEDNESDAY



Cheesy tomato pasta  
garlic bread  
carrot & cucumber sticks

Gluten Milk Soya

OR



Jacket potatoes with  
cheese, beans or  
tuna mayonnaise  
& mixed salad

Milk Egg Fish

OR

Filled baguette with  
ham- Gluten Sesame or  
cheese Gluten Sesame Milk

#### DESSERT



Bakewell tart  
& custard

Egg Gluten Sulphur Dioxide Milk

OR Fruit

#### THURSDAY



Roast pork, stuffing & gravy  
Yorkshire pudding  
roast OR mashed potato  
cabbage & fresh carrots

Milk Egg Gluten

OR



Jacket potatoes with  
cheese, beans or  
tuna mayonnaise  
& mixed salad

Milk Egg Fish

OR

Filled baguette with  
ham- Gluten Sesame or  
cheese Gluten Sesame Milk

#### DESSERT



Honey & oatmeal cookie

Gluten

OR Fruit

#### FRIDAY



MSC fish finger wrap  
Pommes noisette  
crunchy veg & sweetcorn  
tomato ketchup

Gluten Milk Fish

OR



Jacket potatoes with  
cheese, beans or  
tuna mayonnaise  
& mixed salad

Milk Egg Fish

OR

Filled baguette with  
ham- Gluten Sesame or  
cheese Gluten Sesame Milk

#### DESSERT



Strawberry ice-cream tub

Milk

OR Fruit

**AVAILABLE DAILY:** Best of both bread Gluten and Soya Seasonal vegetables available daily Coleslaw Egg when served. Vegetarian meals available upon request

[www.nottinghamshire.gov.uk/schoolmeals](http://www.nottinghamshire.gov.uk/schoolmeals)



Nottinghamshire  
County Council



# AUTUMN/WINTER 2023/24

## WEEK 3

### WEEK COMMENCING

September 11, October 2,  
October 23, November 13  
December 4, December 25,  
January 15, February 5



#### MONDAY



Vegan roll & gravy  
baby roast potatoes  
garden peas  
fresh carrots  
Gluten

OR



Jacket potatoes with  
cheese, beans or  
tuna mayonnaise  
& mixed salad  
Milk Egg Fish

OR

Filled baguette with  
ham- Gluten Sesame or  
cheese Gluten Sesame Milk

#### DESSERT



Chocolate brownie

Gluten

OR Fruit

#### TUESDAY



Nottinghamshire sausage  
hot dog  
diced potatoes  
carrot & cucumber sticks  
Gluten Sesame Sulphur dioxide

OR



Jacket potatoes with  
cheese, beans or  
tuna mayonnaise  
& mixed salad  
Milk Egg Fish

OR

Filled baguette with  
ham- Gluten Sesame or  
cheese Gluten Sesame Milk

#### DESSERT



Fruit yoghurt

Milk

OR Fruit

#### WEDNESDAY



Spaghetti Bolognese  
garlic bread sweetcorn  
cobette

Milk Fish Gluten Soya

OR



Jacket potatoes with  
cheese, beans or  
tuna mayonnaise  
& mixed salad  
Milk Egg Fish

OR

Filled baguette with  
ham- Gluten Sesame or  
cheese Gluten Sesame Milk

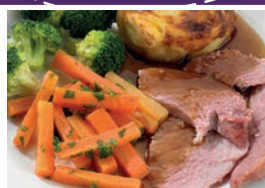
#### DESSERT



Honey cake  
& custard  
Milk Egg Gluten

OR Fruit

#### THURSDAY



Roast Gammon & gravy  
Yorkshire pudding  
roast OR mashed potatoes  
carrots & broccoli  
Milk Egg Gluten

OR



Jacket potatoes with  
cheese, beans or  
tuna mayonnaise  
& mixed salad  
Milk Egg Fish

OR

Filled baguette with  
ham- Gluten Sesame or  
cheese Gluten Sesame Milk

#### DESSERT



Fruit cookie

Gluten

OR Fruit

#### FRIDAY



MSC breaded fish portion  
oven chips  
garden peas & sweetcorn  
tomato ketchup  
Gluten Fish

OR



Jacket potatoes with  
cheese, beans or  
tuna mayonnaise  
& mixed salad  
Milk Egg Fish

OR

Filled baguette with  
ham- Gluten Sesame or  
cheese Gluten Sesame Milk

#### DESSERT



Butterscotch tart

Milk Gluten

OR Fruit

**AVAILABLE DAILY:** Best of both bread Gluten and Soya Seasonal vegetables available daily Coleslaw Egg when served. Vegetarian meals available upon request

[www.nottinghamshire.gov.uk/schoolmeals](http://www.nottinghamshire.gov.uk/schoolmeals)



Nottinghamshire  
County Council